

Wall Cladding



| Name of Product | Colour | Dimensions (mm) | Box Size |
|-----------------|---|---|--|
| Limestone Range | Pasadena Austin Cream Appalachian Cheyenne | This item varies in size from 50 - 200mm high and 150 – 300 mm long | This product has to be ordered per box. Each box contains 1.3m ² of product. Corner units can be ordered per lineal meter. |



PASEDNA LIMESTONE



APPALACHIAN LIMESTONE



CHEYENNE LIMESTONE



AUSTIN CREAM LIMESTONE

| | | | |
|----------------|--|---|---|
| Country Rubble | Tuscany Chateau English Serrano | Various shapes and sizes to retain natural look | This product has to be ordered per box. Each box contains 1.3m ² of product. Corner units must be ordered per lineal meter up the wall. |
|----------------|--|---|---|



TUSCANY COUNTRY RUBBLE



CHATEAU COUNTRY RUBBLE



ENGLISH COUNTRY RUBBLE



SERRANO COUNTRY RUBBLE

Special Instructions: Please use the colours indicated in this information as a guide only. Not all products are kept in stock at our 4 Melbourne Brick Superstores, we recommend that you call prior to coming in to confirm the item in stock. If not, we are happy to arrange for the stock to be bought in for you. Please allow approximately 1 week from order date for delivery (delivery fee may apply).

Call 1300 722 102 or visit www.melbournebrick.com.au for store locations.

Wall Cladding



| Name of Product | Colour | Dimensions (mm) | Box Size |
|-----------------------|--|--|---|
| Mountain Ledge | Warm Springs Sycamore Buckskin Smokey Oakridge | Panels are 125mm high and 500, 300, 200mm in length | This product has to be ordered per box. Each box contains 0.5m ² of product. Corner units must be ordered per lineal meter up the wall. |



SYCAMORE MOUNTAIN LEDGE



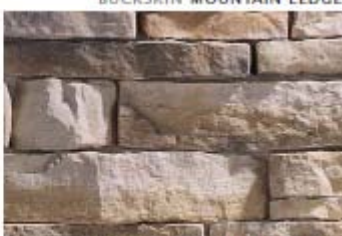
BUCKSKIN MOUNTAIN LEDGE



WARM SPRINGS MOUNTAIN LEDGE



SMOKEY MOUNTAIN LEDGE



OAKRIDGE MOUNTAIN LEDGE

| | | | |
|----------------------------|--|--|---|
| Stacked Stone Range | Bluestone Castaway Mountain Blend Old English Slate Grey | Panels are 100mm high and 500, 300, 200mm in length | This product has to be ordered per box. Each box contains 0.5m ² of product. Corner units must be ordered per lineal meter up the wall. |
|----------------------------|--|--|---|



OLD ENGLISH STACKED STONE



MOUNTAIN BLEND STACKED STONE



BLUESTONE STACKED STONE



SLATE GREY STACKED STONE



CASTAWAY STACKED STONE

Special Instructions: Please use the colours indicated in this information as a guide only. Not all products are kept in stock at our 4 Melbourne Brick Superstores, we recommend that you call prior to coming in to confirm the item in stock. If not, we are happy to arrange for the stock to be bought in for you. Please allow approximately 1 week from order date for delivery (delivery fee may apply).

Call **1300 722 102** or visit www.melbournebrick.com.au for store locations.

Wall Cladding



| Name of Product | Colour | Dimensions (mm) | Box Size |
|------------------------|--|---|---------------------------------------|
| Litestone Range | Territory Slate Calcite Blend Valley Coal Tiger Slate | 400 x 125 x 8 – 12 mm No Corners | Each box contains 0.25 m ² |



Valley Coal



Territory Slate



Tiger Sand

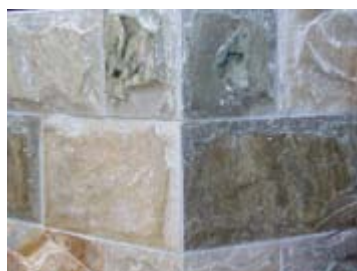


Calcite Blend

| Décor Stacked Stone Range | Colour | Dimensions (mm) | Box Size |
|----------------------------------|--|---|--|
| | Oynx Ivory Bisque Shimmer Russet Alpine | 600 x 150 x 20-30mm Corners: 400 x 150mm return | Each box contains 0.45 m ² 5 corner pieces per box |



| Ardesia Stone Range | Colour | Dimensions (mm) | Box Size |
|----------------------------|----------------|---|---------------------------------------|
| | Oynx Bisque | 400 x 200 x 15-30mm No corner option | Each box contains 0.48 m ² |



Bisque



Oynx

Special Instructions: Please use the colours indicated in this information as a guide only. Not all products are kept in stock at our 4 Melbourne Brick Superstores, we recommend that you call prior to coming in to confirm the item in stock. If not, we are happy to arrange for the stock to be bought in for you. Please allow approximately 1 week from order date for delivery (delivery fee may apply).

Call **1300 722 102** or visit www.melbournebrick.com.au for store locations.

Wall Cladding



| Name of Product | Colour | Dimensions (mm) | Box Size |
|-------------------|---|---|--|
| Ledge Stone Range | Golden Quartz Multi Color Slate Dovas Granite Black Mica Bulu Grey Slate Rustic Mica | 610 x 152 x 30mm approx. (Refer to diagram below for info on corner units) | Each box contains 0.34m ² of product. (2 short corners and 4 long corners per box) |



GOLDEN QUARTZ



MULTI COLOUR SLATE



BLACK MICA SCHIST



DOVAS GRANITE



BULU GREY SLATE



RUSTIC MICA SCHIST

Corners



This product uses an interlocking cladding system. This is done to improve the natural look of the product. Both long and short corner pieces come with a 150mm return.

Special Instructions: Please use the colours indicated in this information as a guide only. Not all products are kept in stock at our 4 Melbourne Brick Superstores, we recommend that you call prior to coming in to confirm the item in stock. If not, we are happy to arrange for the stock to be bought in for you. Please allow approximately 1 week from order date for delivery (delivery fee may apply).

Call **1300 722 102** or visit www.melbournebrick.com.au for store locations.

Wall Cladding



| Name of Product | Colour | Dimensions (mm) | Box Size |
|-----------------------------|--|---|---|
| Hobblers Stone Range | Bluestone Pitchers Sandston Mix Buller Stone Hotham Stone Colonial Brown Random Mix Burnt Umber High Country Granite | Various shapes and sizes to retain natural look | This product has to be ordered per box. Each box contains 1m ² of product. |



BLUESTONE PITCHERS



SANDSTONE MIX



BULLER STONE



HOTHAM STONE



COLONIAL BROWN
RANDOM MIX



BURNT UMBER



HIGH COUNTRY
GRANITE

Special Instructions: Please use the colours indicated in this information as a guide only. Not all products are kept in stock at our 4 Melbourne Brick Superstores, we recommend that you call prior to coming in to confirm the item in stock. If not, we are happy to arrange for the stock to be bought in for you. Please allow approximately 1 week from order date for delivery (delivery fee may apply).

Call **1300 722 102** or visit www.melbournebrick.com.au for store locations.