

BEST WINTER COLOUR

Palmetto® Buffalo has the best winter colour for a low maintenance turf. Over a two year evaluation Palmetto® turf had a rating of 55% better winter colour than Sir Walter and a rating of 158% better winter colour than Shademaster. Research also showed Palmetto® turf needed autumn fertiliser to achieve outstanding winter colour.

Combined average results of 1st and 2nd year winter colour trials

	Palmetto® Buffalo	Sir Walter Buffalo	Shademaster Buffalo	Couch Grass
1st year	5.81	4.64	2.57	1.6
2nd year	5.43	3.5	2.1	0.93
Average	5.62	4.07	2.335	1.265

NOTE: rated from 0 (totally brown) to 10 (perfectly green)
 For more info go to www.ozbreed.com.au/research-papers/3yr-winter-colour-results.html

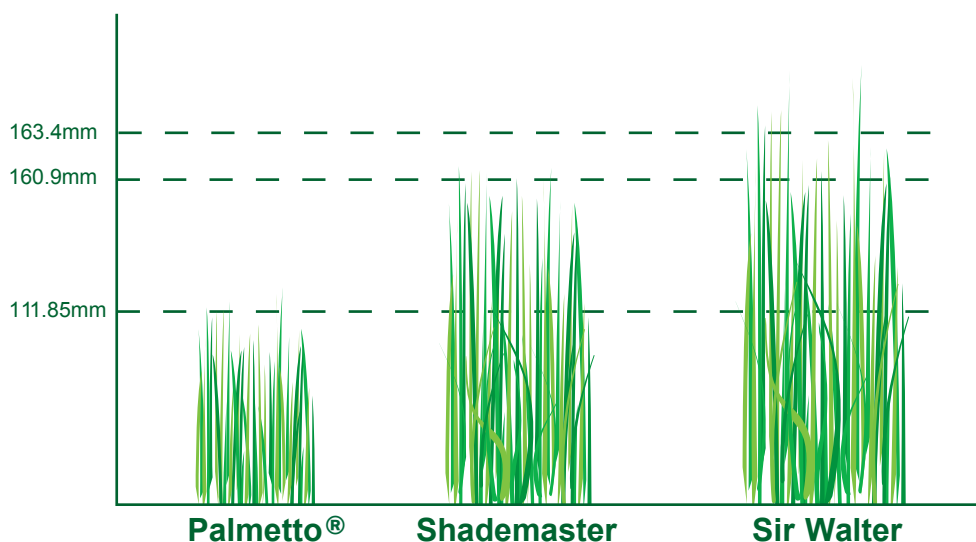


Winter colour taken in the coldest part of winter after many frosts. Colours are taken from the above photo.



HOLIDAY CARE

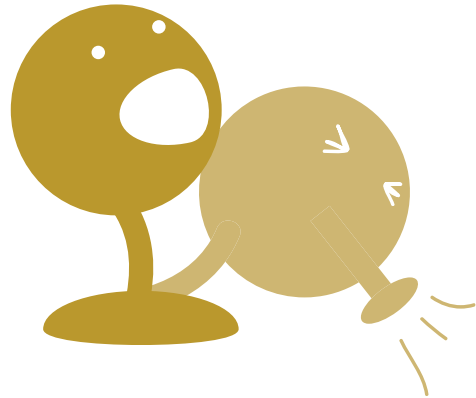
Don't come back to a jungle after your holidays. Palmetto® turf can be left a lot longer without any maintenance or mowing without becoming too tall, untidy or invasive compared to Sir Walter and Shademaster Buffalo's. After approximately 20 weeks Palmetto® Buffalo was 49.05mm lower than Shademaster and 51.55mm lower than Sir Walter. Palmetto® turf was also observed to be more uniform and less invasive than the other Buffalo's.



Tested over a 20 week period. For more information go to www.ozbreed.com.au/research-papers/3yr-no-mowing-results.html

ALLERGIES? NO WORRIES!

Seed heads on grass can cause allergies. In a full year trial at Richmond, Palmetto® turf had an average of 40% less seed head than the other popular Buffalo varieties. Data from DPI & HAL study.



NO MORE MOWING EVERY WEEKEND

For your lawn to look good and need less frequent mowing, Palmetto® turf is the best choice for Buffalo's. Palmetto® Buffalo has 28% less clippings than Sir Walter and 10% less clippings than Shademaster. Palmetto® turf needs 14.3% less mowing than Sir Walter and 7.7% less mowing than Shademaster.

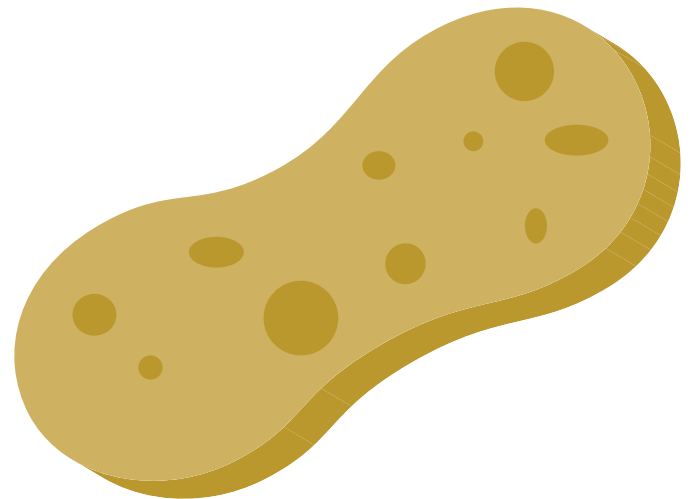
For more info go to
www.ozbreed.com.au/research-papers/3yr-clipping-rates.html
www.ozbreed.com.au/research-papers/mowing-trials.html



LESS THATCH

Thatch is an annoying issue with some Buffalo's and can make your lawn feel spongy. Palmetto® turf is the Buffalo Grass with the least thatch. In trials, Sir Walter had more thatch and Shademaster had the most thatch of any of the Buffalo's. A Palmetto® lawn is easier to mow because it has less thatch.

For more info go to
www.ozbreed.com.au/research-papers/mowing-trials.html
www.palmetto.com.au/pdf_files/mowingtrial.pdf



Please note: The results from this internal Ozbreed research and investigations were achieved in what we believe was an accurate and unbiased manor, and should anyone follow the same experiment again, Ozbreed believes they should get similar results. For purposes of full disclosure, the following information is tabled. This investigation was conducted by Ian Paananen, a scientist, who has completed some other paid work for Ozbreed Pty Ltd in the past, and Henry Locock, a mowing contractor who has worked for the principle of Ozbreed in the past, and Nathan Dutschke a horticulturalist and an employee of Ozbreed. For the full research information go to www.ozbreed.com.au/plant-turf-research.html

Palmetto® Turf Installation and Care

SOIL PREPARATION

There is no better time to enhance the ultimate beauty and success of your new Buffalo lawn than by improving the soil before any planting takes place. The benefits of proper and complete soil preparation are:

- Improved uniformity
- Increased density
- Faster recovery from wear
- Reduced use of water, fertiliser and chemicals
- Reduced maintenance

Why Is Good Soil So Important?

For optimum growth, Buffalo grass needs just four things (in the proper balance) to grow: sunlight, air, water and nutrients. Reduce any of these, or provide too much of any one, and the grass may die or simply suffer. In the right proportions, the Buffalo grass will flourish, providing not only beauty to the landscape, but also a clean and safe place to play and many benefits to the environment.

Grass obtains three of these four essential factors (air, water and nutrients) from the soil, but many soils are less than ideal for growing grass. Some soils contain too much clay and may be very compacted. It's great for roads, but bad for grass because air and water aren't available to the roots and the roots can't grow. Other soils may have too much sand. They are beautiful on a beach, but difficult to grow grass because water and nutrients won't stay in the root zone long enough for the plant to use. Another frequently observed problem with many soils is that its pH (the degree of acidity or alkalinity) is too high or too low for optimum grass growth.

What Is The Best Soil For Your Buffalo Grass?

Loams, sandy loams and loamy sands, with a pH of 6.0 to 7.0 are the very best soils for producing a beautiful, high-use, low-maintenance Buffalo lawn. Unfortunately, this ideal soil mixture is seldom found on any property after construction.

How Deep Should Your Soil Be For Buffalo?

The absolute minimum soil depth for a care-free lawn is 10 cm; however, for deeper root penetration and the benefits that brings, the accepted standard is 15 cm.

Can Soils Be Improved?

Practically without exception, not only can most soils be improved, they usually need to be improved to obtain the maximum results with only a minimum of other on-going effort.

The knowledge of what is necessary, the amount and availability of materials and the immediate costs of time and money are the factors that typically deter people from taking the steps necessary to improving the soil. While some people do not fully understand the importance of good soils for

grass, many also believe they can save time and money by ignoring the need to improve their lawns soil.

The fact is that failing to improve the soil before planting is only inviting a much greater and continual investment of both time and money, that will never return its value as fully as preparing the soil properly before planting any grass.

WATCH THE VIDEO ONLINE: Preparing Your Soil For Your New Lawn

Visit <http://youtu.be/-ylhGydzPM> to watch the video.

HOW TO INSTALL PALMETTO® BUFFALO

- Remove all building waste and weeds.
- Spread a free draining soil to a depth of 7-15cm (roots can penetrate much deeper) or loosen ground and mix in appropriate soil conditioners. Phone a soil supplier for more advice on this option. For sandy soils, simply mix in organic material and rotary hoe.
- Level the surface using a screeding board, lawn leveller or similar device.
- In hot months, moisten the soil but do not make the soil too wet. Do not lay the Buffalo grass on hot, dry soil.
- Lay the Buffalo grass as soon as possible after delivery.
- On hot days, lay a section of the Buffalo grass and lightly water. Repeat until all turf is laid. On cool days, the Buffalo grass can be laid all at once. Roll and water thoroughly within one hour of laying turf.
- Water thoroughly for 7-10 days or until the Buffalo lawn is established take care that the water is saturating the soil beneath the turf. In colder months, the buffalo lawn will take longer to establish. The turf should not dry out until roots are established.
- When the soil has firmed and the grass has rooted down, usually 2-3 weeks after laying (longer during winter), mow lightly to tidy up your new buffalo lawn.

WATCH THE VIDEO ONLINE: How To Install Turf Properly

Visit <http://youtu.be/3avu1VTa3uc> to watch the video.

MOWING YOUR LAWN

- Mow every 5-10 days in the hot months; mow every 3-6 weeks in the cold months.
- Mowing height will vary: 2-5cm in sunny/lightly shaded situations, 5-7cm in heavier shaded situations.

WATCH THE VIDEO ONLINE: Lawn Mowing Tips

Visit <http://youtu.be/IGLpBszQJfk> to watch the video.

FERTILISING TIPS

- Buffalo grass needs to be fed to remain strong and healthy.
- It's important to use a slow release fertiliser one month after laying (applying fertiliser before this time has shown not to make a difference to lawn establishment).
- Use a complete fertiliser in early April and early September.
- At other times of the year use a slow release fertiliser. If you need a quick green up, use a fertiliser high in nitrogen to promote a lush green lawn- e.g. Supergreen or organic based slow release fertilisers. In heat of summer avoid over fertilising or using manure based products.

For the recipe to keep Palmetto® Soft Leaf Buffalo lush green even in winter, visit this page:
<http://www.palmetto.com.au/recipe-to-keep-palmetto-soft-leaf-buffalo-lush-green-all-year-round.html>

WATCH THE VIDEO ONLINE: Watering and Fertilising Tips For Your Lawn

Visit <http://youtu.be/iQh7aQvI4Sk> to watch the video.

PESTS, WEEDS AND DISEASES

Palmetto® Buffalo is resistant to pests, weeds etc compared to most other turf varieties, but as with any natural product, occasional problems can occur. If these problems occur we recommend the following:

- **Pests**—watch for the lawn grub (e.g. web worm or army worm) and african black beetle; apply suitable pesticides according to directions.
- **Weeds**—if weeds infest, hand eradicate before seed head develops or apply a suitable weedicide (ask your local garden centre).

NB: sprays containing DICAMBA must not be applied to soft leaf Buffalo grass...!!!!!!

WATCH THE VIDEO ONLINE: Lawn Grub and Disease Control

Visit <http://youtu.be/6isTKHlw5tw> to watch the video.

WATCH THE VIDEO ONLINE: Killing and Keeping Weeds Out Of Your Lawn

Visit <http://youtu.be/08IVHpXQ-TU> to watch the video.

WATERING TIPS

Newly installed Buffalo has important watering needs. Proper watering immediately after installation will ensure the lawn becomes established, and it will also have an impact on how well it continues to flourish for years to come. Begin watering new turf within a half hour after it is laid on the soil. Apply at least 2 to 3 cm (1 inch) of water so that the soil

beneath the Buffalo is very wet. Ideally the soil 7 to 10 cm (3 to 4 inches) below the surface should be moist. Below are some watering tips for new buffalo lawns:

- Pull back a corner of the Buffalo grass and push a screwdriver or other sharp tool into the soil. It should push in easily and have moisture along the first 7 to 10 cm (3 or 4 inches), or you need to apply more water.
- Make absolutely certain that water is getting to all areas of your new lawn, regardless of the type of sprinkling system. Corners and edges are easily missed by many sprinklers (if windy) and are vulnerable to drying out faster than the centre portion. Also, areas near buildings dry out faster because of reflected heat and may need more water.
- Runoff may occur on some soils and sloped areas before the soil is adequately moist. To conserve water and ensure adequate soak in, turn off the water when runoff begins, wait 30 minutes to an hour and restart the watering on the same area. Repeat this start and stop process until correct soil moisture is achieved. For the next two weeks keep the below-turf soil surface moist with daily (or more frequent) watering. Especially hot, dry or windy periods will necessitate increased watering amounts and frequency.
- As the turf starts to establish its new roots into the soil, it will be difficult, impossible and/or harmful to pull back a corner to check beneath the turf, but you can still use a sharp tool to check moisture depth by pushing it through the buffalo grass and into the soil.
- Water as early in the morning as possible to take advantage of the daily start of the grass's normal growing cycle, usually lower wind speeds and considerably less water loss because of high temperature evaporation.
- If the temperature approaches 37 °C (100 F), or high winds are constant for more than half of the day, reduce the temperature of the buffalo lawn surface by lightly sprinkling the area. This sprinkling does not replace the need for longer, deeper watering, which will become even more critical during adverse weather conditions.
- Infrequent and deep watering is preferred to frequent and shallow watering because the roots will only grow as deeply as its most frequently available water supply. Deeply rooted grass has a larger "soil-water bank" to draw moisture from and this will help the grass survive drought and hot weather that rapidly dries out the upper soil layer.

WATCH THE VIDEO ONLINE: Watering and Fertilising Tips For Your Lawn

Visit <http://youtu.be/iQh7aQvI4Sk> to watch the video.

- Water thoroughly and regularly after Palmetto® Buffalo has been laid to encourage a deep and vigorous root system (it will be able to fossick for water and therefore be more able to withstand hot dry conditions).
- Once the root system has fully established, water thoroughly only when needed-when a slight wilting is visible, usually once every 7-10 days in summer (on sandy soils more often), with much less or no water in cooler months.
- Remember that infrequent, deep watering promotes a healthy lawn.
- Over watering encourages excessive growth, disease and root rot.
- It is best to water in the early morning; night watering is not recommended.